

Barco portacontenedores

Tipo post-panamax

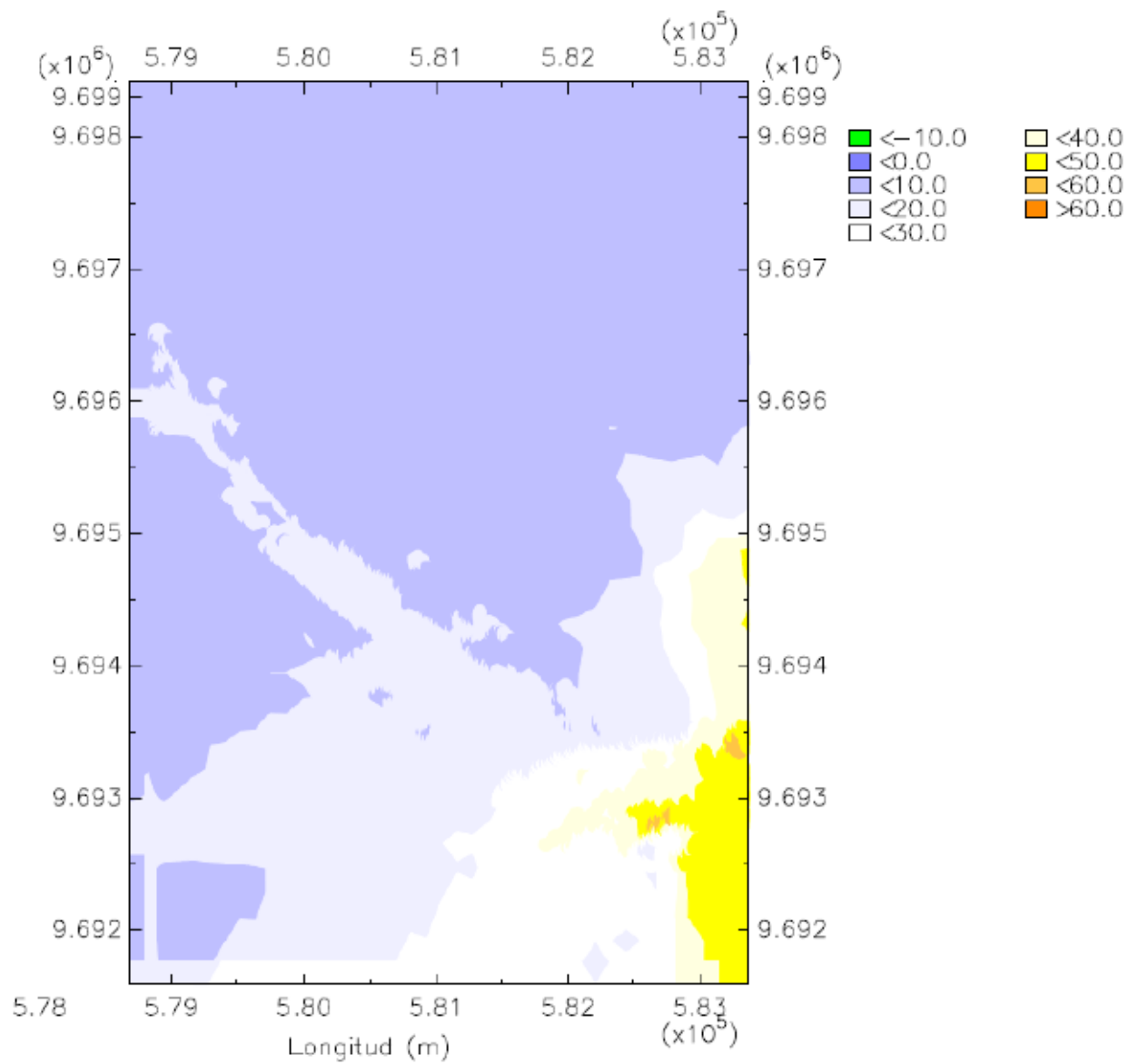
Eslora: 318.20 m

Manga: 42.800 m

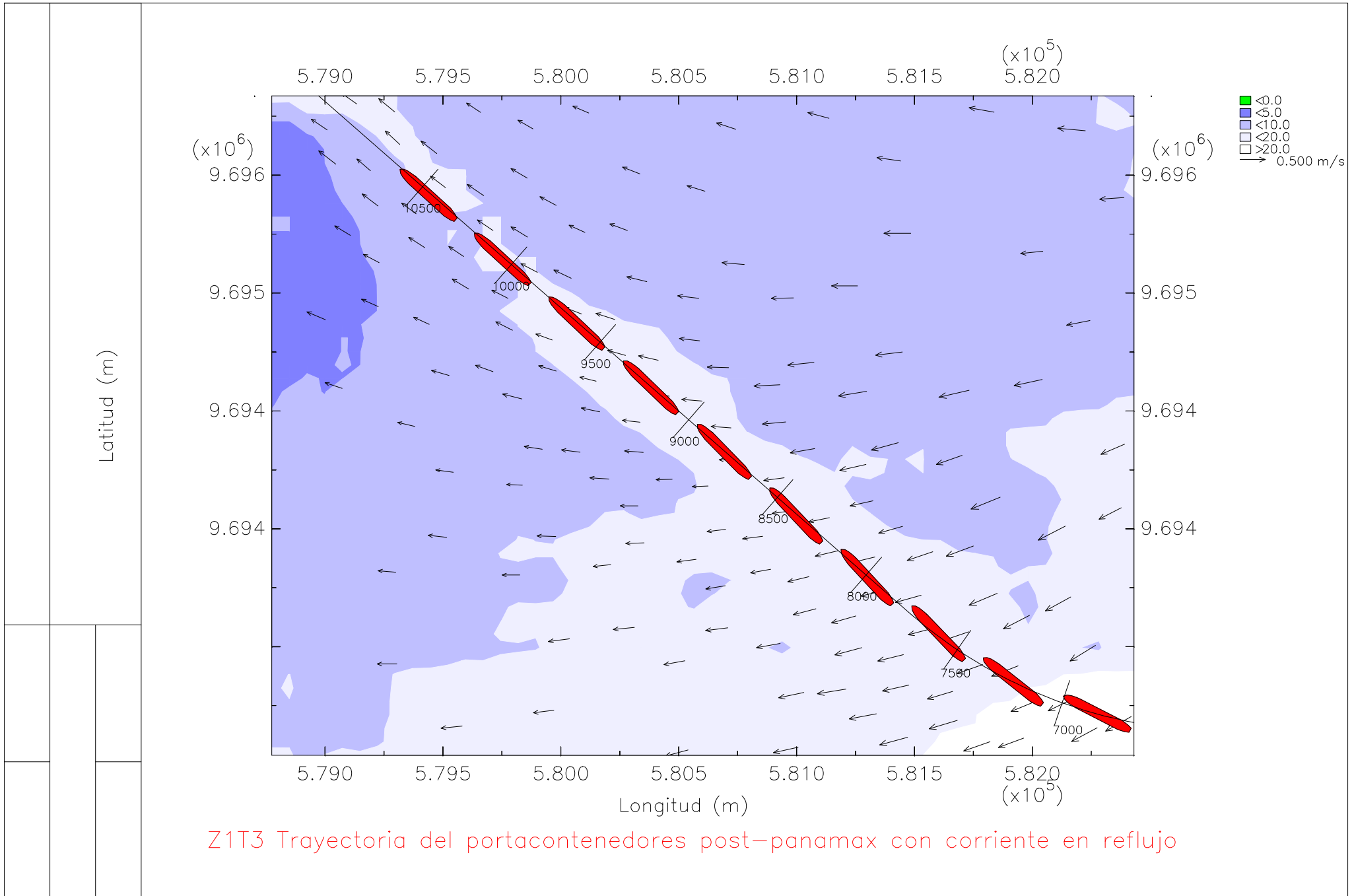
Calado: 11.60 m

En la zona 1, tramo 3

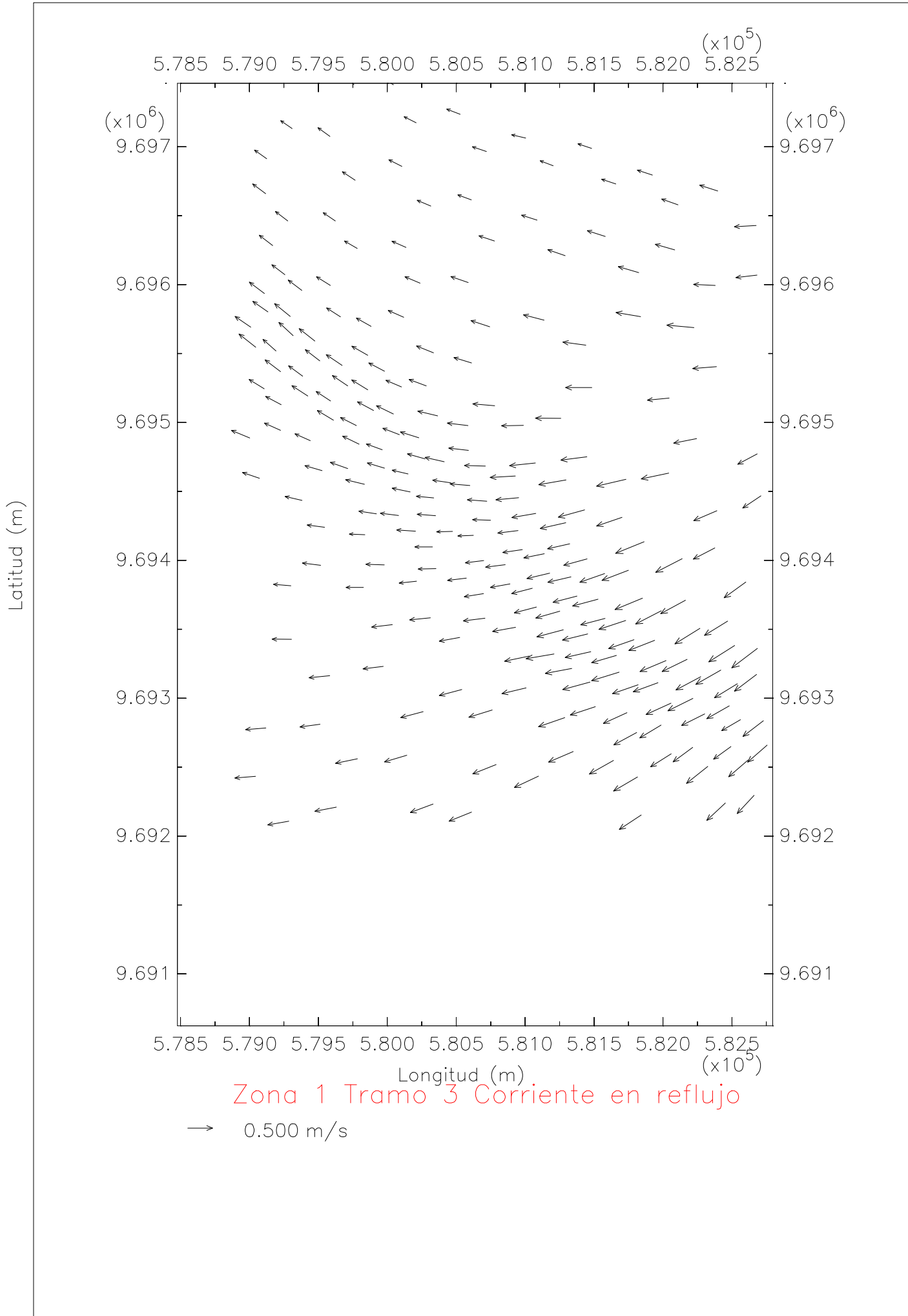
Bajo condiciones de vaciante

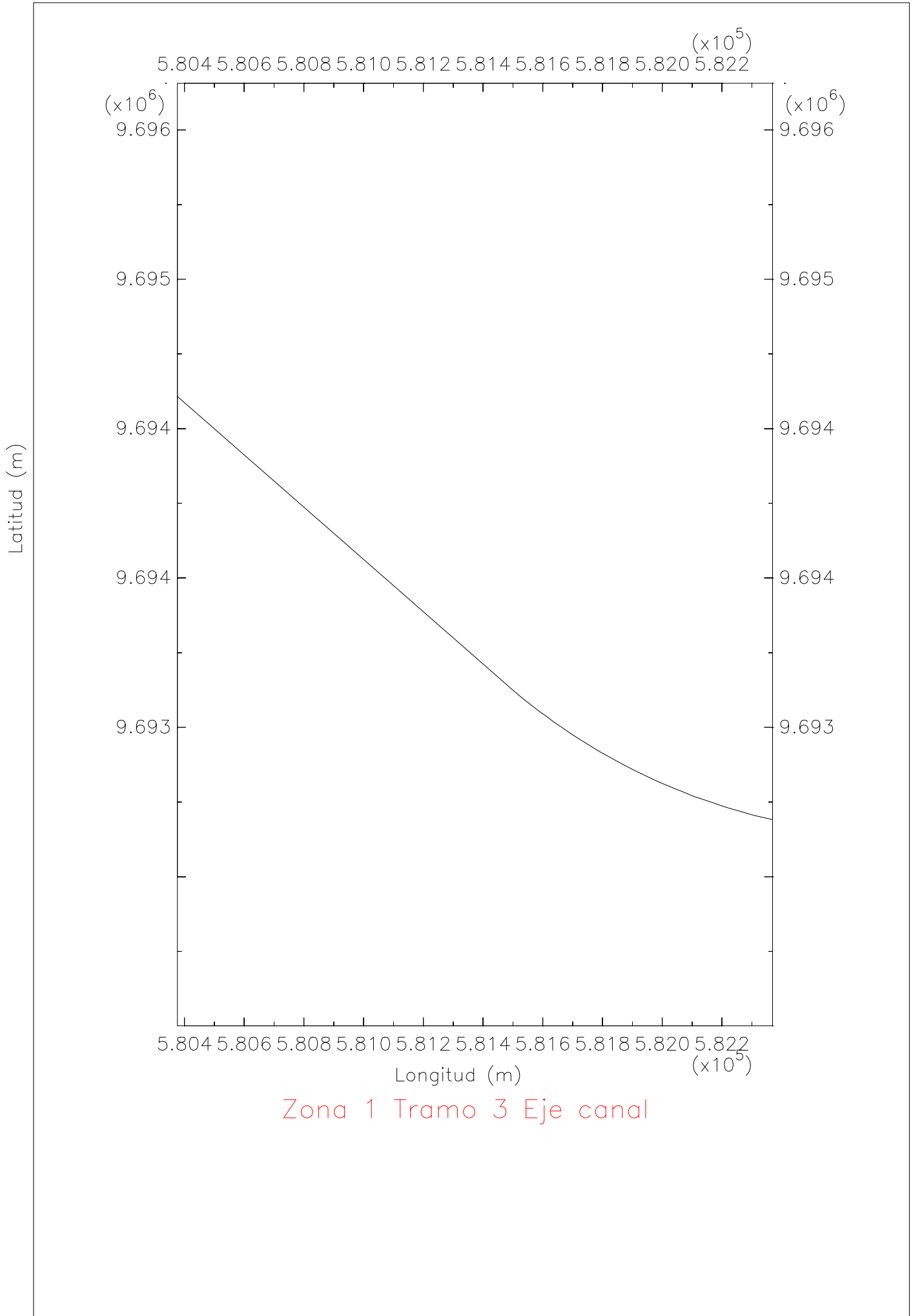


Zona 1 Tramo 3 Profundidad

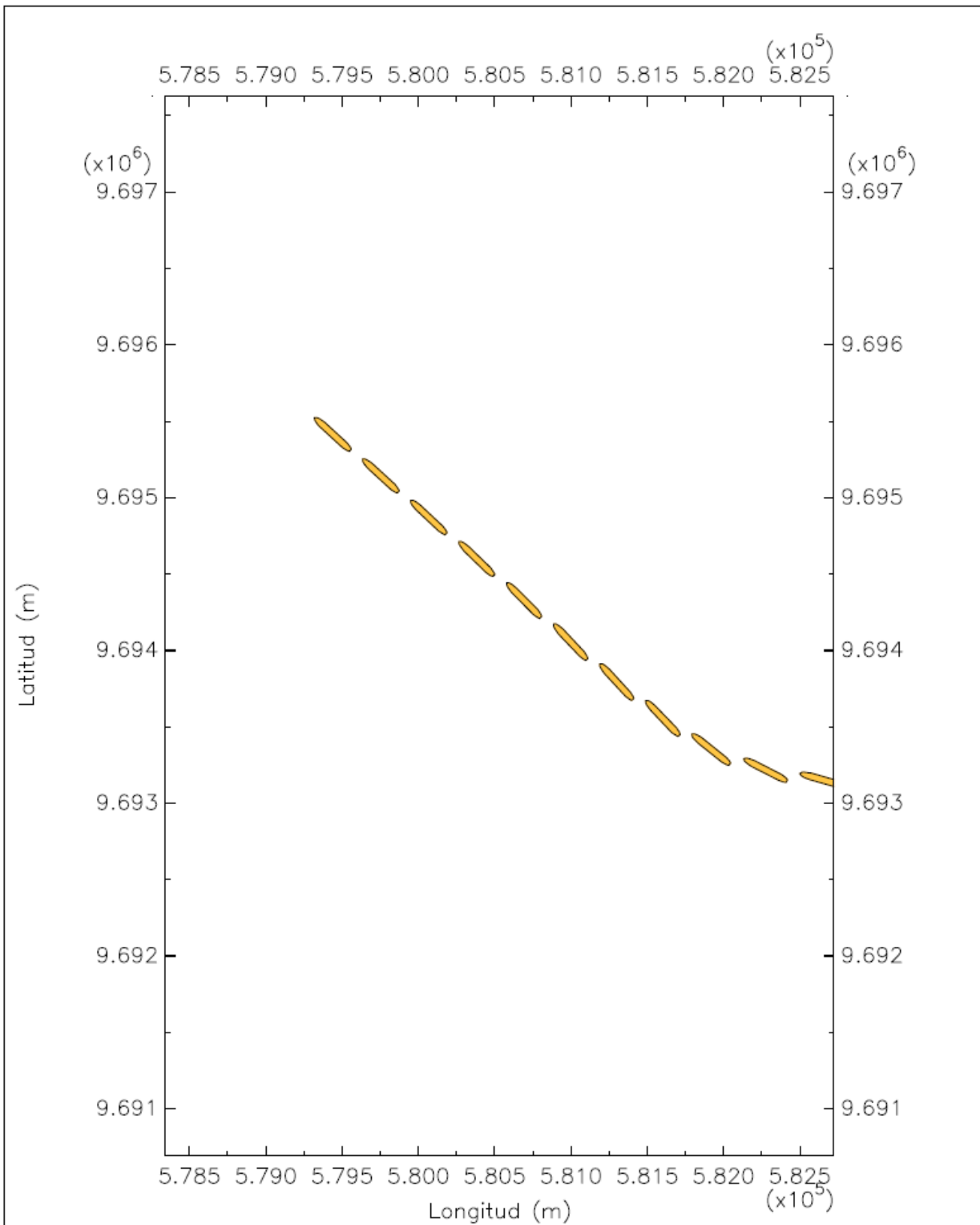


Z1T3 Trayectoria del portacontenedores post-panamax con corriente en reflujio

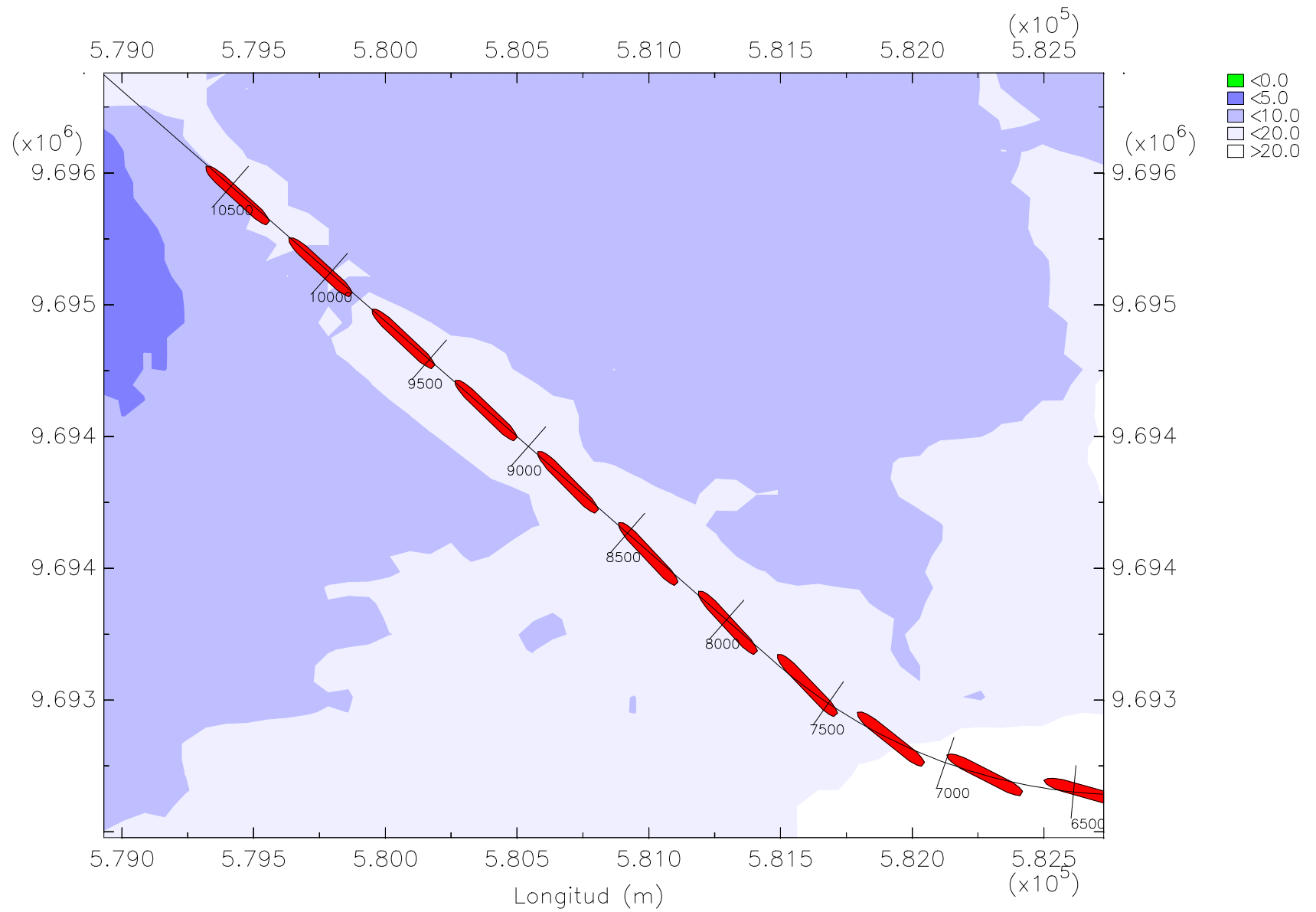




Zona 1 Tramo 3 Eje canal



Z1T3 Trayectoria del barco portacontenedores post-panamax en reflujos



Z1T3 Trayectoria del barco portacontenedores post-panamax en reflujos con prof